

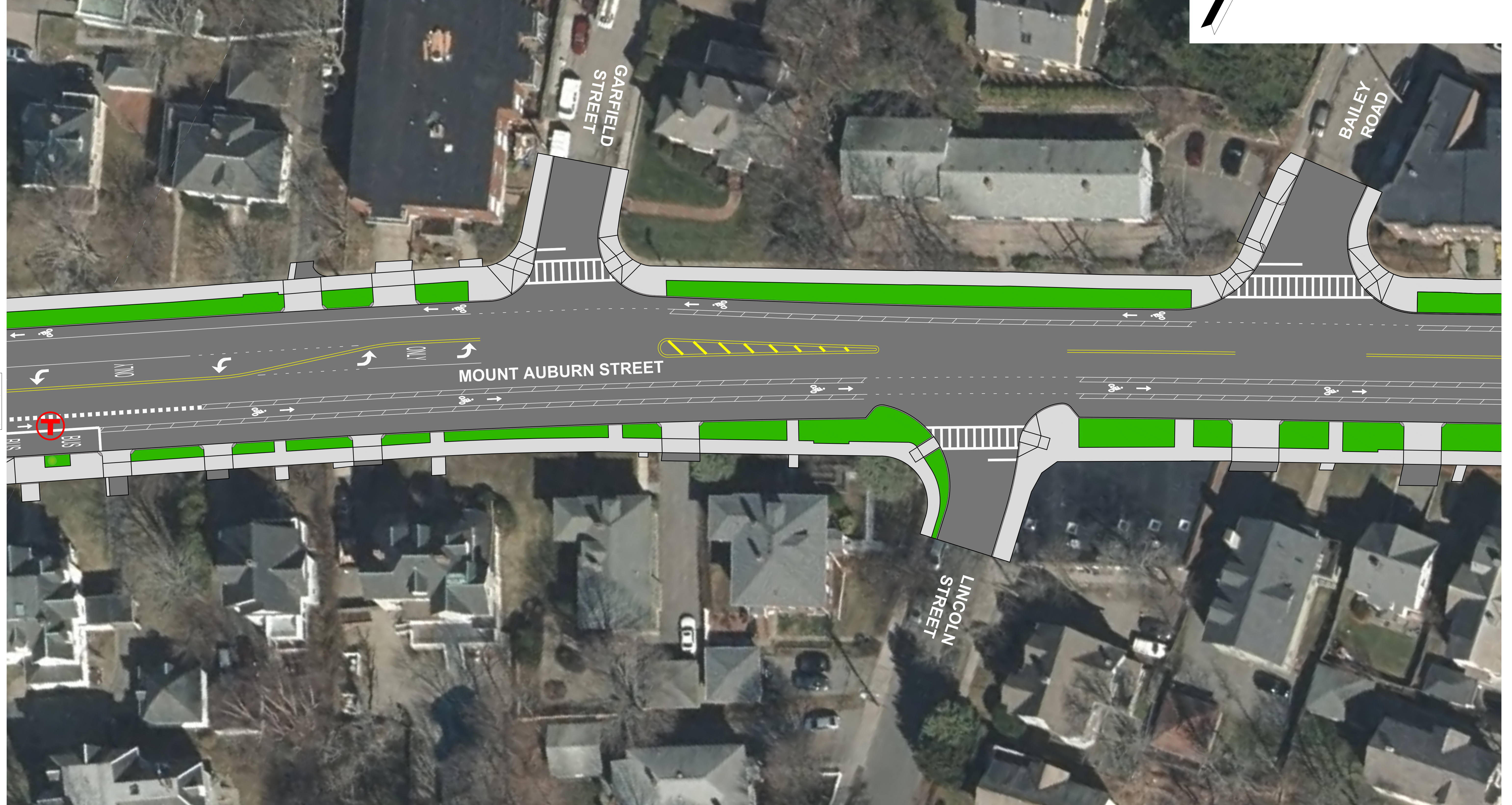
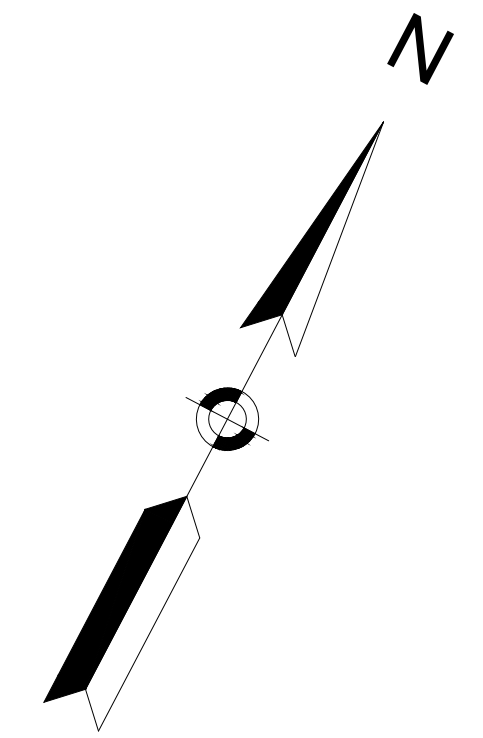
LEGEND

-  PROPOSED HOT MIX ASPHALT ROADWAY AND HOT MIX ASPHALT DRIVEWAY
-  PROPOSED CEMENT CONCRETE SIDEWALK AND CEMENT CONCRETE DRIVEWAY AND CEMENT CONCRETE PEDESTRIAN CURB RAMPS
-  PROPOSED GRASS/LANDSCAPE AREA
-  PROPOSED RAPID FLASHING BEACON
-  PROPOSED TRAFFIC SIGNAL
-  MBTA BUS STOP
-  MBTA BUS SHELTER

**WATERTOWN
ROUTE 16 (MOUNT AUBURN STREET)**

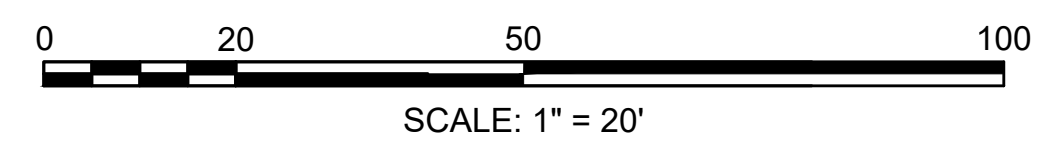
STATE	FED. AID PROJ. NO.	SHEET NO.	TOTAL SHEETS
MA	-		
PROJECT FILE NO. 607777			

FINAL DESIGN OPEN HOUSE RENDERING
SHEET 5 OF 18



CONTINUED ON SHEET NO. 4

CONTINUED ON SHEET NO. 6



PREPARED BY: JUNE 27, 2023
Tighe & Bond
Engineers | Environmental Specialists

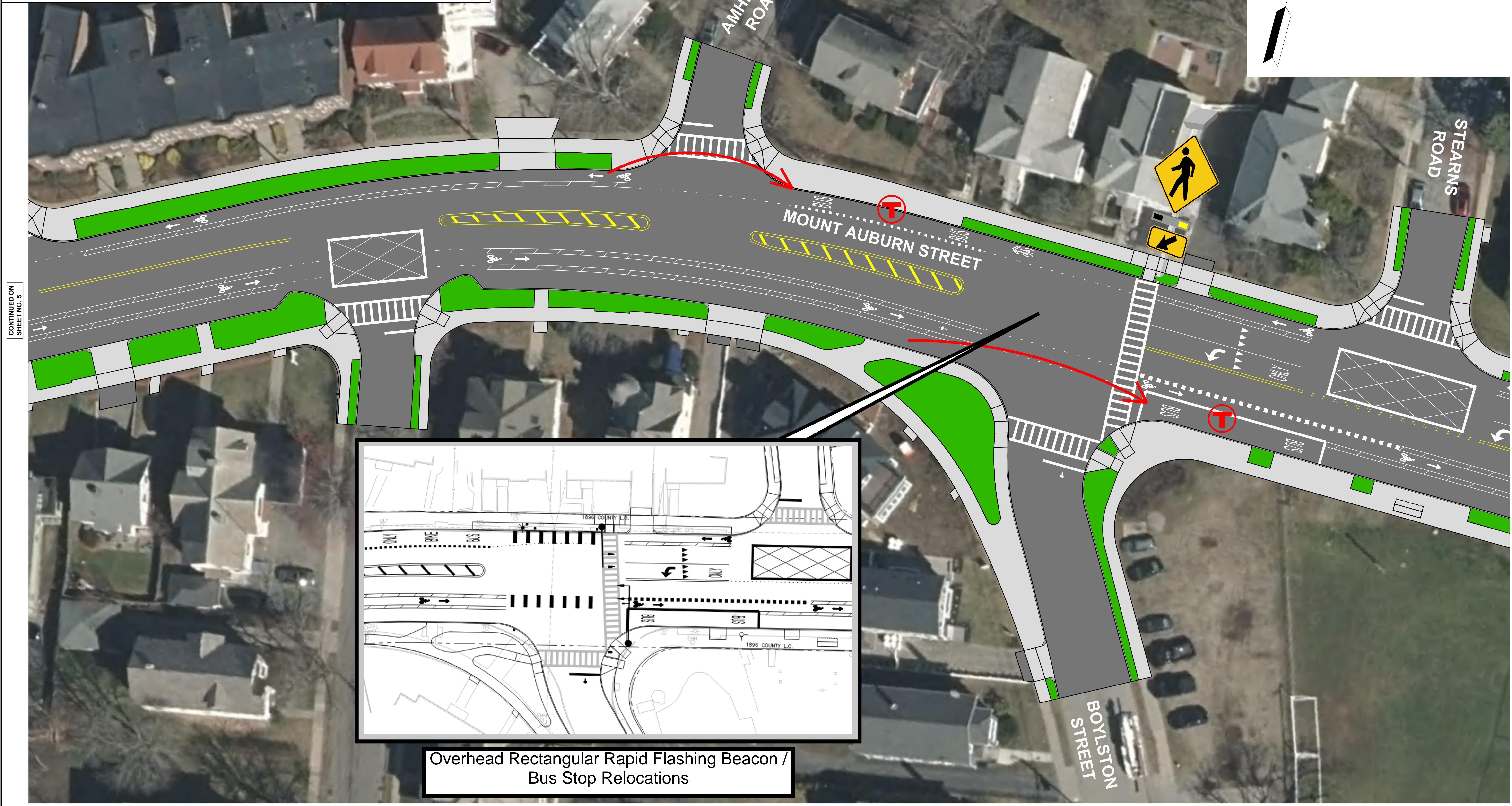
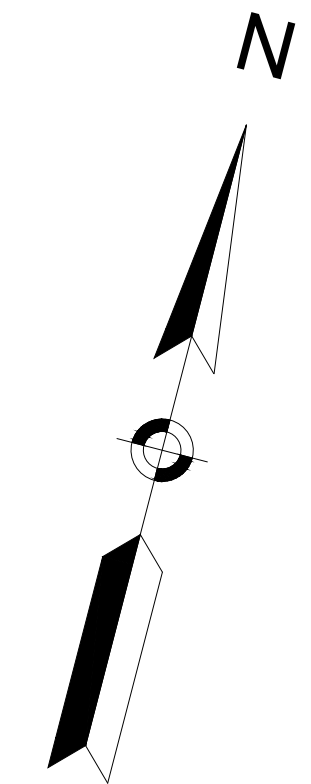
LEGEND

-  PROPOSED HOT MIX ASPHALT ROADWAY AND HOT MIX ASPHALT DRIVEWAY
-  PROPOSED CEMENT CONCRETE SIDEWALK AND CEMENT CONCRETE DRIVEWAY AND CEMENT CONCRETE PEDESTRIAN CURB RAMPS
-  PROPOSED GRASS/LANDSCAPE AREA
-  PROPOSED RAPID FLASHING BEACON
-  PROPOSED TRAFFIC SIGNAL
-  MBTA BUS STOP
-  MBTA BUS SHELTER

**WATERTOWN
ROUTE 16 (MOUNT AUBURN STREET)**

STATE	FED. AID PROJ. NO.	SHEET NO.	TOTAL SHEETS
MA	-		
PROJECT FILE NO. 607777			

FINAL DESIGN OPEN HOUSE RENDERING
SHEET 6 OF 18




CONTINUED ON SHEET NO. 5

CONTINUED ON SHEET NO. 7

**Overhead Rectangular Rapid Flashing Beacon /
Bus Stop Relocations**

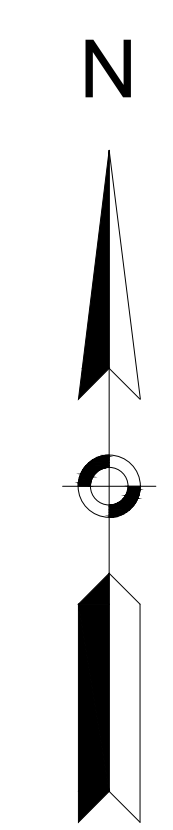
LEGEND

-  PROPOSED HOT MIX ASPHALT ROADWAY AND HOT MIX ASPHALT DRIVEWAY
-  PROPOSED CEMENT CONCRETE SIDEWALK AND CEMENT CONCRETE DRIVEWAY AND CEMENT CONCRETE PEDESTRIAN CURB RAMPS
-  PROPOSED GRASS/LANDSCAPE AREA
-  PROPOSED RAPID FLASHING BEACON
-  PROPOSED TRAFFIC SIGNAL
-  MBTA BUS STOP
-  MBTA BUS SHELTER

**WATERTOWN
ROUTE 16 (MOUNT AUBURN STREET)**

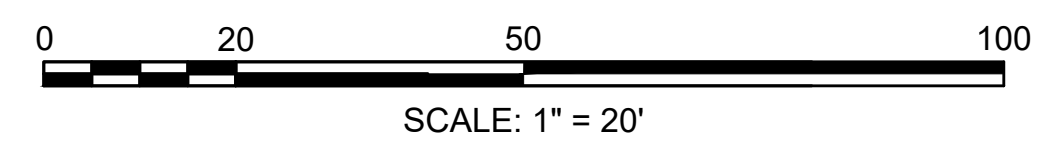
STATE	FED. AID PROJ. NO.	SHEET NO.	TOTAL SHEETS
MA	-	7	18
PROJECT FILE NO. 607777			

FINAL DESIGN OPEN HOUSE RENDERING
SHEET 7 OF 18



CONTINUED ON SHEET NO. 6

CONTINUED ON SHEET NO. 8

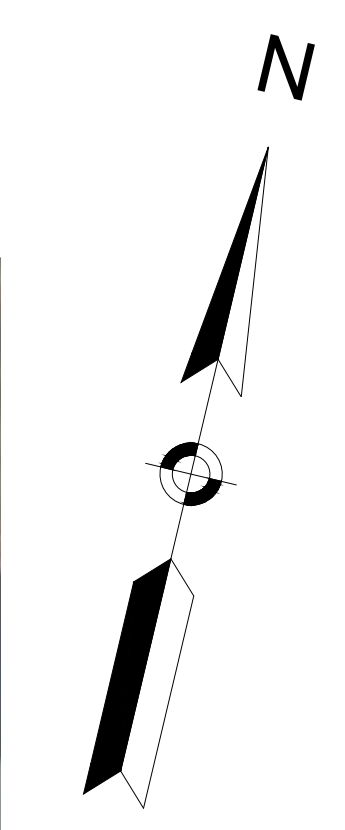


PREPARED BY: JUNE 27, 2023
Tighe & Bond
Engineers | Environmental Specialists

**WATERTOWN
ROUTE 16 (MOUNT AUBURN STREET)**

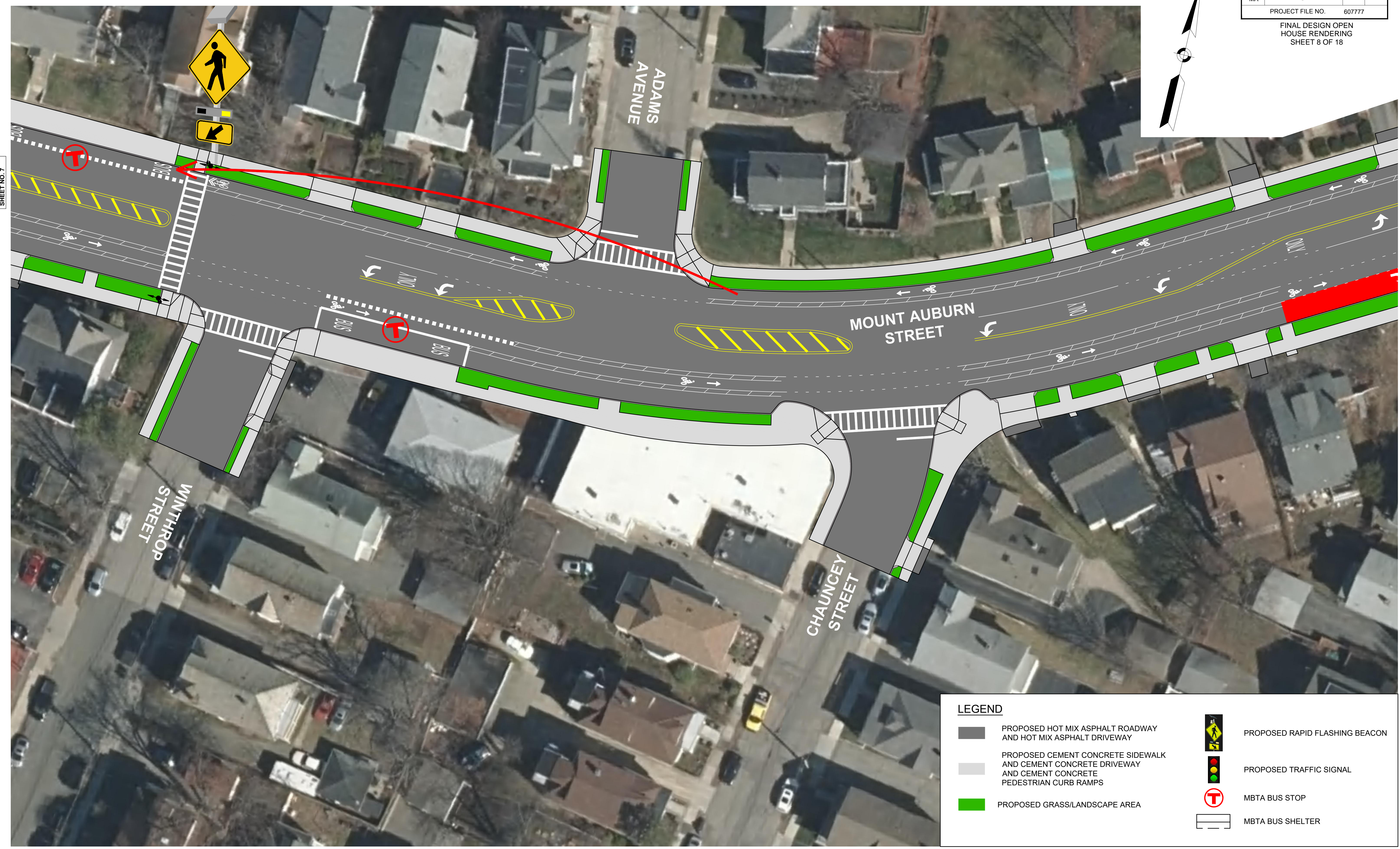
STATE	FED. AID PROJ. NO.	SHEET NO.	TOTAL SHEETS
MA	-		
PROJECT FILE NO. 607777			

FINAL DESIGN OPEN
HOUSE RENDERING
SHEET 8 OF 18










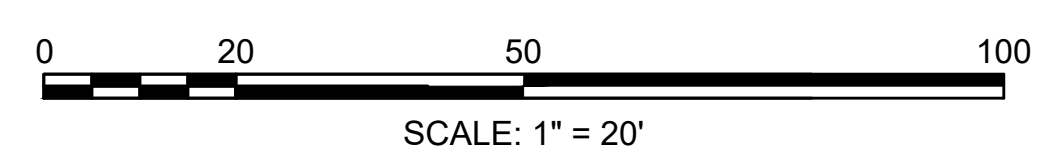
CONTINUED ON
SHEET NO. 7

CONTINUED ON
SHEET NO. 9



LEGEND

-  PROPOSED HOT MIX ASPHALT ROADWAY AND HOT MIX ASPHALT DRIVEWAY
-  PROPOSED CEMENT CONCRETE SIDEWALK AND CEMENT CONCRETE DRIVEWAY AND CEMENT CONCRETE PEDESTRIAN CURB RAMPS
-  PROPOSED GRASS/LANDSCAPE AREA
-  PROPOSED RAPID FLASHING BEACON
-  PROPOSED TRAFFIC SIGNAL
-  MBTA BUS STOP
-  MBTA BUS SHELTER



PREPARED BY: JUNE 27, 2023
Tighe & Bond
Engineers | Environmental Specialists