

**WATERTOWN
ROUTE 16 (MOUNT AUBURN STREET)**

STATE	FED. AID PROJ. NO.	SHEET NO.	TOTAL SHEETS
MA	-	128	391
PROJECT FILE NO.		607777	

**TRAFFIC SIGN & PAVEMENT MARKING PLANS
SHEET 2 OF 18**

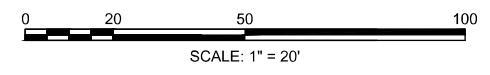
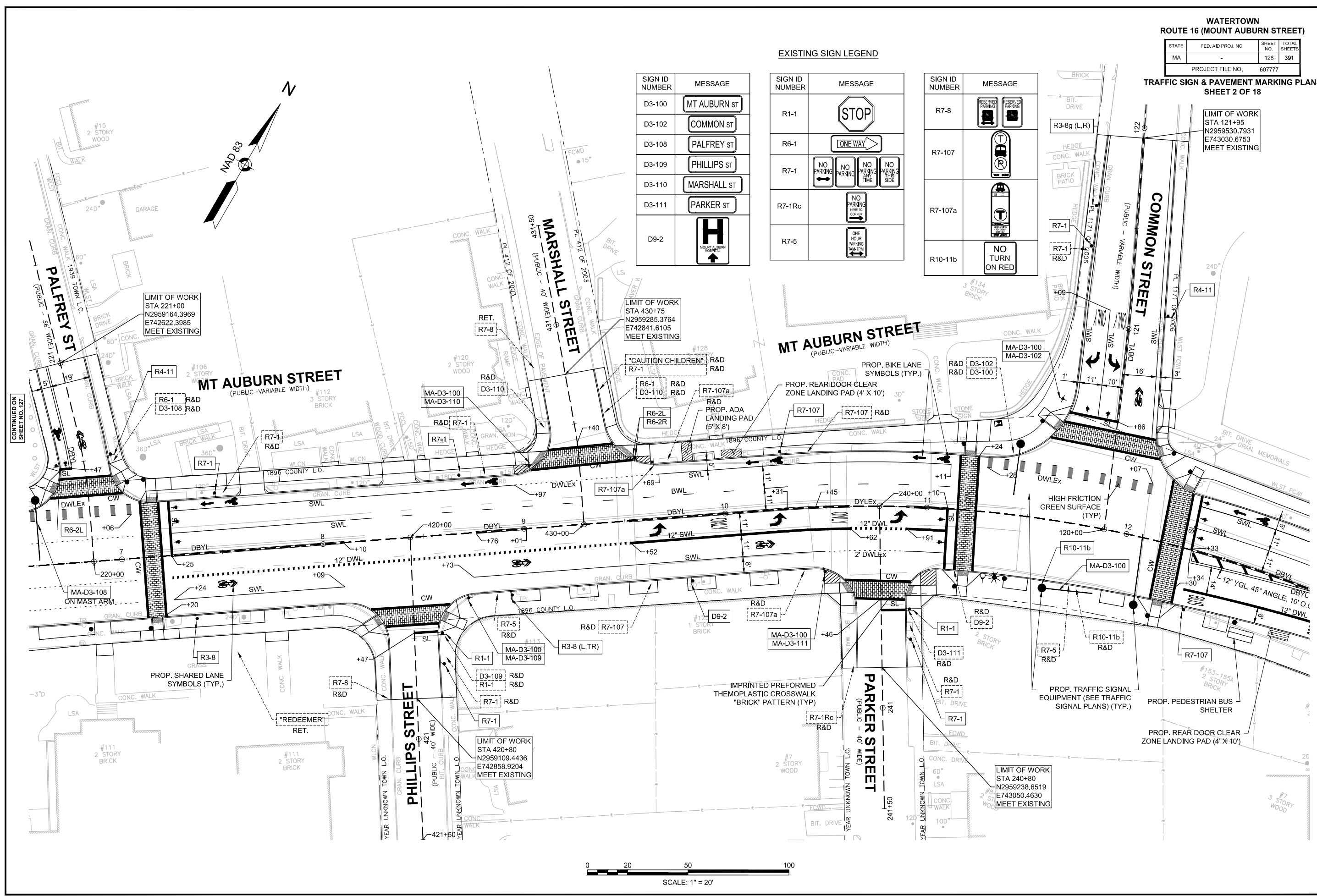
LIMIT OF WORK
STA 121+95
N2959530.7931
E743030.6753
MEET EXISTING

SIGN ID NUMBER	MESSAGE
D3-100	MT AUBURN ST
D3-102	COMMON ST
D3-108	PALFREY ST
D3-109	PHILLIPS ST
D3-110	MARSHALL ST
D3-111	PARKER ST
D9-2	H MOUNT AUBURN HOSPITAL

EXISTING SIGN LEGEND

SIGN ID NUMBER	MESSAGE
R1-1	STOP
R6-1	ONE WAY
R7-1	NO PARKING NO PARKING ANY TIME NO PARKING THIS SIDE
R7-1Rc	NO PARKING HERE TO CORNER
R7-5	ONE HOUR PARKING DAILY

SIGN ID NUMBER	MESSAGE
R7-8	RESERVED PARKING
R7-107	T NO TRUCKS
R7-107a	T NO TRUCKS
R10-11b	NO TURN ON RED



CONTINUED ON
SHEET NO. 127

CONTINUED ON
SHEET NO. 129

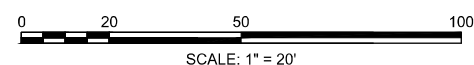
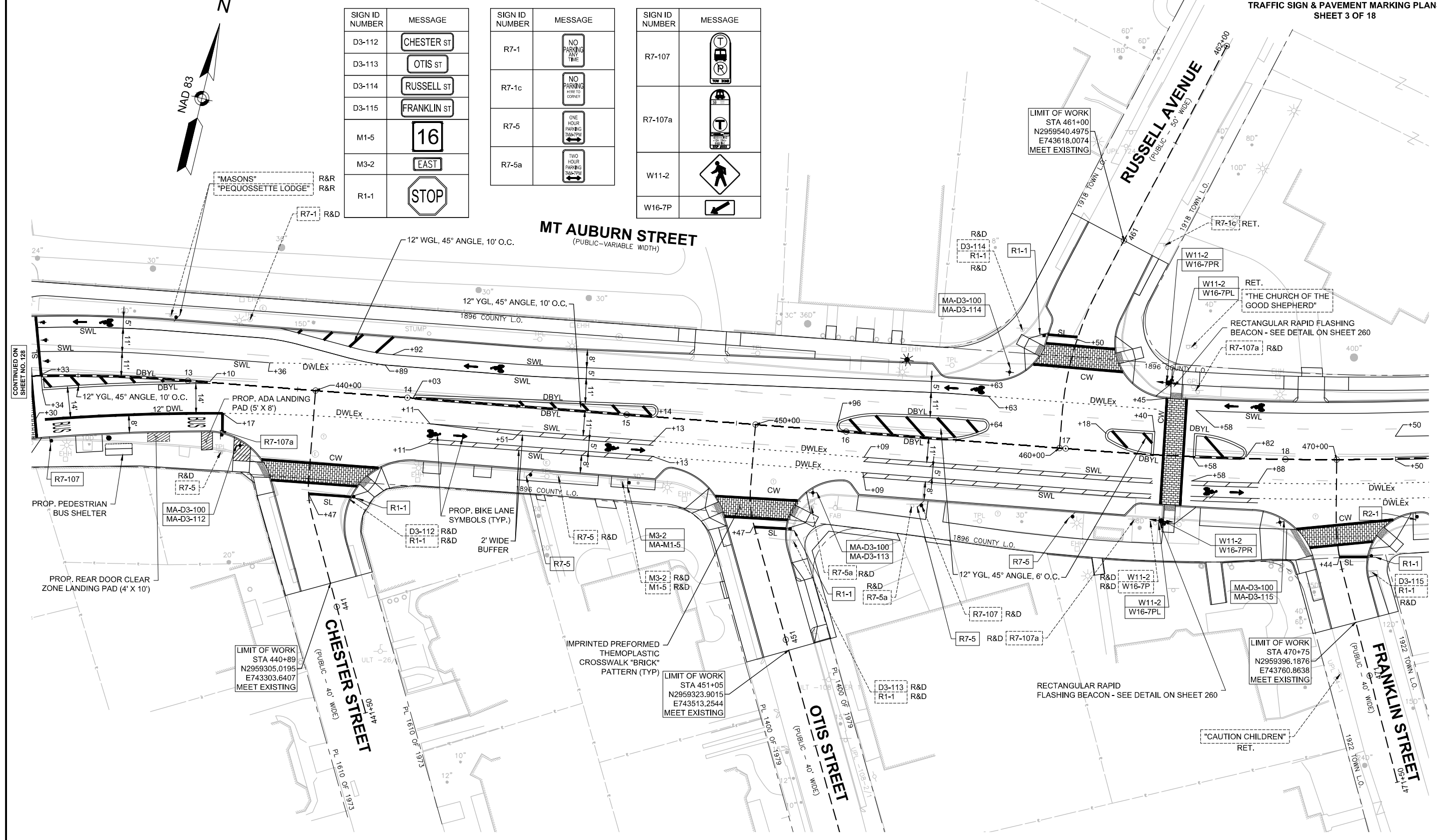
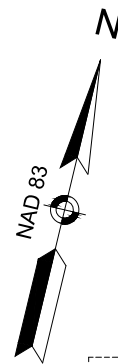
STATE	FED. AID PROJ. NO.	SHEET NO.	TOTAL SHEETS
MA	-	129	391
PROJECT FILE NO.		607777	

EXISTING SIGN LEGEND

SIGN ID NUMBER	MESSAGE
D3-112	CHESTER ST
D3-113	OTIS ST
D3-114	RUSSELL ST
D3-115	FRANKLIN ST
M1-5	16
M3-2	EAST
R1-1	STOP

SIGN ID NUMBER	MESSAGE
R7-1	NO PARKING ANY TIME
R7-1c	NO PARKING HERE TO CORNER
R7-5	ONE HOUR PARKING 8AM-12PM
R7-5a	TWO HOUR PARKING 8AM-12PM

SIGN ID NUMBER	MESSAGE
R7-107	[No Right Turn Sign]
R7-107a	[No Right Turn Sign with Arrow]
W11-2	[Pedestrian Crossing Sign]
W16-7P	[Pavement Marking]

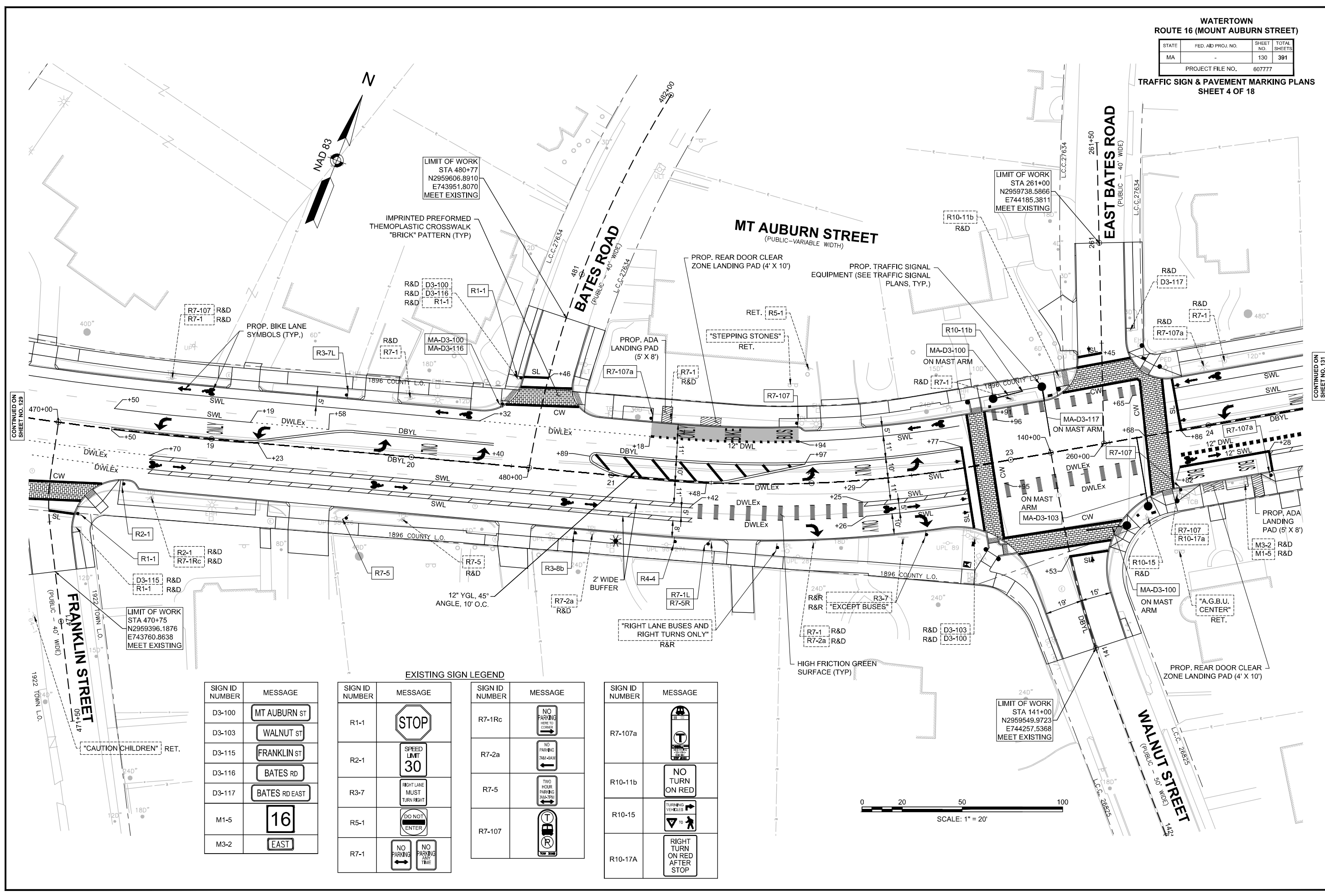


CONTINUED ON SHEET NO. 128

CONTINUED ON SHEET NO. 130

STATE	FED. AID PROJ. NO.	SHEET NO.	TOTAL SHEETS
MA	-	130	391

PROJECT FILE NO. 607777

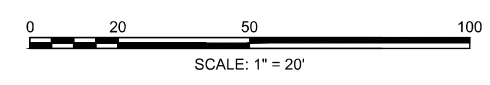


SIGN ID NUMBER	MESSAGE
D3-100	MT AUBURN ST
D3-103	WALNUT ST
D3-115	FRANKLIN ST
D3-116	BATES RD
D3-117	BATES RD EAST
M1-5	16
M3-2	EAST

EXISTING SIGN LEGEND

SIGN ID NUMBER	MESSAGE	SIGN ID NUMBER	MESSAGE
R1-1	STOP	R7-1Rc	NO PARKING HERE TO CORNER
R2-1	SPEED LIMIT 30	R7-2a	NO PARKING 7AM-9AM
R3-7	RIGHT LANE MUST TURN RIGHT	R7-5	TWO HOUR PARKING 7AM-7PM
R5-1	DO NOT ENTER	R7-107	NO TURN ON RED
R7-1	NO PARKING ANY TIME		

SIGN ID NUMBER	MESSAGE
R7-107a	NO TURN ON RED
R10-11b	NO TURN ON RED
R10-15	TURNING VEHICLES
R10-17A	RIGHT TURN ON RED AFTER STOP



CONTINUED ON
SHEET NO. 129

CONTINUED ON
SHEET NO. 131

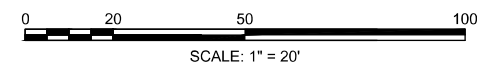
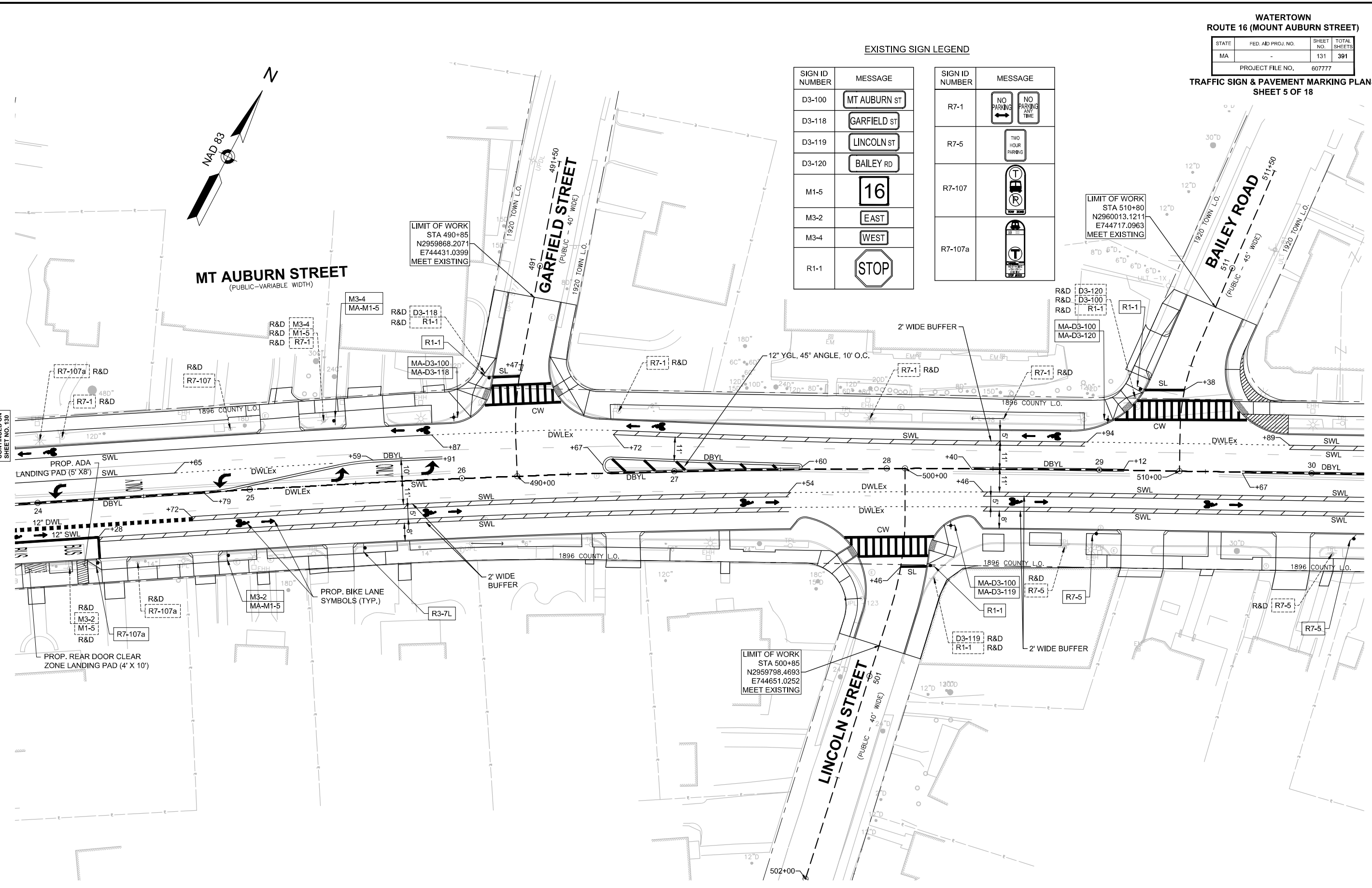
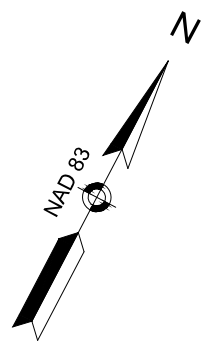
WATERTOWN
ROUTE 16 (MOUNT AUBURN STREET)

STATE	FED. AID PROJ. NO.	SHEET NO.	TOTAL SHEETS
MA	-	131	391
PROJECT FILE NO.		607777	

TRAFFIC SIGN & PAVEMENT MARKING PLANS
SHEET 5 OF 18

EXISTING SIGN LEGEND

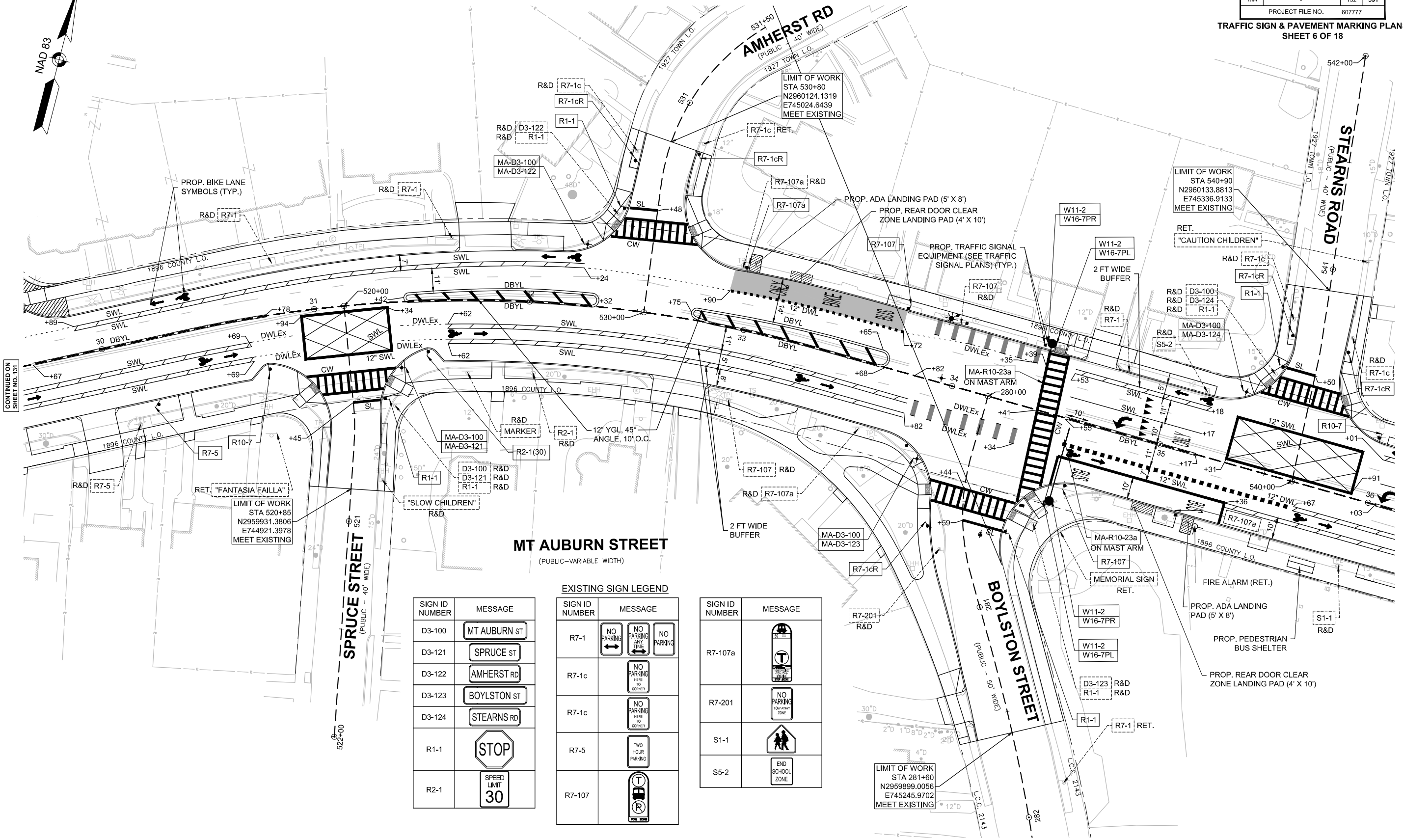
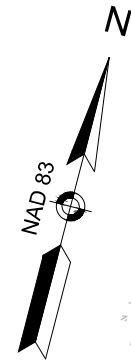
SIGN ID NUMBER	MESSAGE	SIGN ID NUMBER	MESSAGE
D3-100	MT AUBURN ST	R7-1	NO PARKING NO PARKING ANY TIME
D3-118	GARFIELD ST	R7-5	TWO HOUR PARKING
D3-119	LINCOLN ST	R7-107	T
D3-120	BAILEY RD	R7-107a	T
M1-5	16		
M3-2	EAST		
M3-4	WEST		
R1-1	STOP		



CONTINUED ON SHEET NO. 130

CONTINUED ON SHEET NO. 132

STATE	FED. AID PROJ. NO.	SHEET NO.	TOTAL SHEETS
MA	-	132	391
PROJECT FILE NO.		607777	

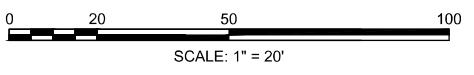


SIGN ID NUMBER	MESSAGE
D3-100	MT AUBURN ST
D3-121	SPRUCE ST
D3-122	AMHERST RD
D3-123	BOYLSTON ST
D3-124	STEARNS RD
R1-1	STOP
R2-1	SPEED LIMIT 30

EXISTING SIGN LEGEND

SIGN ID NUMBER	MESSAGE
R7-1	NO PARKING ANY TIME
R7-1c	NO PARKING HERE TO CORNER
R7-1c	NO PARKING TO CORNER
R7-5	TWO HOUR PARKING
R7-107	T

SIGN ID NUMBER	MESSAGE
R7-107a	T
R7-201	NO PARKING TO CORNER
S1-1	PEDESTRIAN CROSSING
S5-2	END SCHOOL ZONE



CONTINUED ON SHEET NO. 133

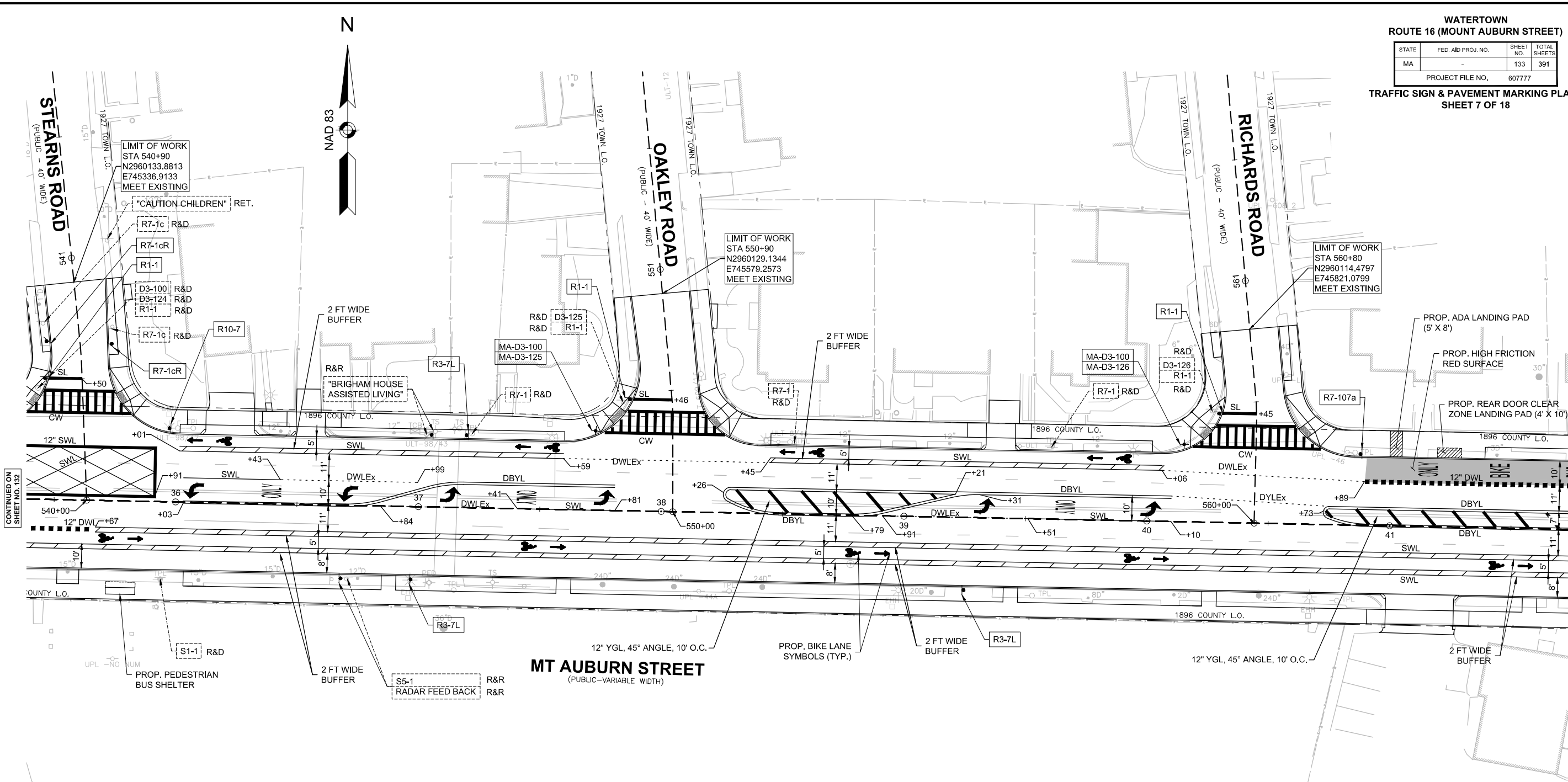
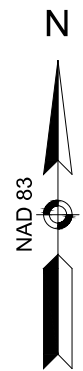
607777_H09(PAVEMENT MARKING PLANS).DWG

Printed on 8/11/2023 3:00 PM

WATERTOWN
ROUTE 16 (MOUNT AUBURN STREET)

STATE	FED. AID PROJ. NO.	SHEET NO.	TOTAL SHEETS
MA	-	133	391
PROJECT FILE NO.		607777	

TRAFFIC SIGN & PAVEMENT MARKING PLANS
SHEET 7 OF 18

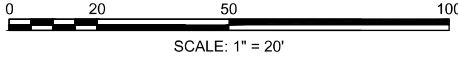


EXISTING SIGN LEGEND

SIGN ID NUMBER	MESSAGE
D3-100	MT AUBURN ST
D3-124	STEARNS RD
D3-125	OAKLEY RD
D3-126	RICHARDS RD

SIGN ID NUMBER	MESSAGE
R1-1	STOP
R7-1	NO PARKING ANY TIME
R7-1c	NO PARKING NEAR TO CORNER

SIGN ID NUMBER	MESSAGE
S1-1	SCHOOL SPEED LIMIT
S5-1	WHEN FLASHING



CONTINUED ON SHEET NO. 132

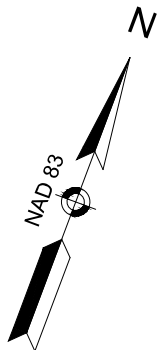
CONTINUED ON SHEET NO. 134

WATERTOWN
ROUTE 16 (MOUNT AUBURN STREET)

STATE	FED. AID PROJ. NO.	SHEET NO.	TOTAL SHEETS
MA	-	135	391

PROJECT FILE NO. 607777

TRAFFIC SIGN & PAVEMENT MARKING PLANS
SHEET 9 OF 18

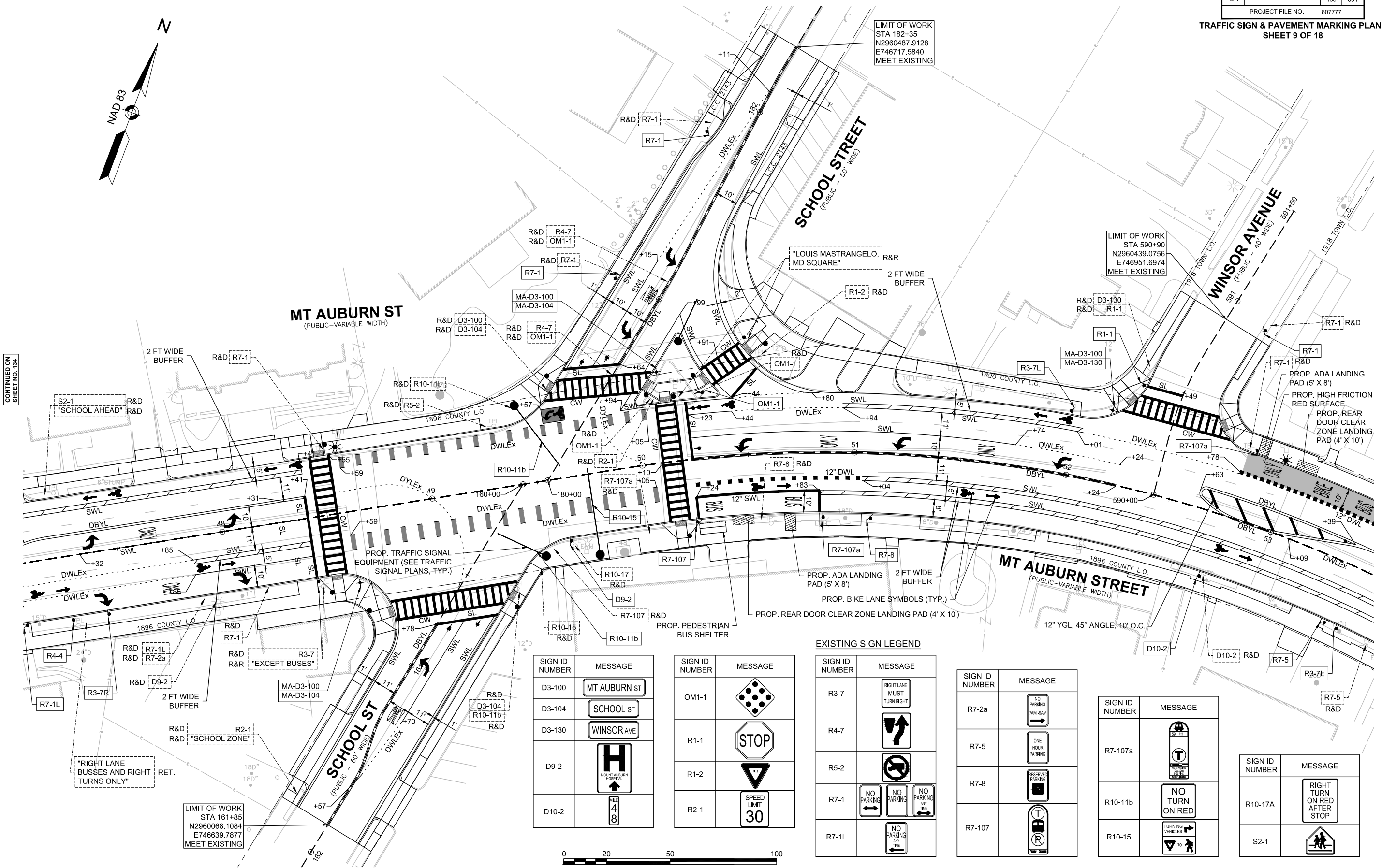


LIMIT OF WORK
STA 182+35
N2960487.9128
E746717.5840
MEET EXISTING

LIMIT OF WORK
STA 590+90
N2960439.0756
E746951.6974
MEET EXISTING

CONTINUED ON
SHEET NO. 134

CONTINUED ON
SHEET NO. 135



SIGN ID NUMBER	MESSAGE
D3-100	MT AUBURN ST
D3-104	SCHOOL ST
D3-130	WINSOR AVE
D9-2	H MOUNT AUBURN HOSPITAL
D10-2	48

SIGN ID NUMBER	MESSAGE
OM1-1	
R1-1	STOP
R1-2	
R2-1	SPEED LIMIT 30

EXISTING SIGN LEGEND

SIGN ID NUMBER	MESSAGE
R3-7	RIGHT LANE MUST TURN RIGHT
R4-7	
R5-2	
R7-1	NO PARKING NO PARKING NO PARKING
R7-1L	NO PARKING

SIGN ID NUMBER	MESSAGE
R7-2a	NO PARKING 7AM-9AM
R7-5	ONE HOUR PARKING
R7-8	RESERVED PARKING
R7-107	

SIGN ID NUMBER	MESSAGE
R7-107a	
R10-11b	NO TURN ON RED
R10-15	TURNING VEHICLES

SIGN ID NUMBER	MESSAGE
R10-17A	RIGHT TURN ON RED AFTER STOP
S2-1	

